



Lactate Scout Vet

Accurate lactate measurement
to drive animal care decisions

- Result in 10 seconds
- Only a single drop of blood required
- Simple to use
- E-paper display for easier viewing
- Ergonomic design, small, light and robust

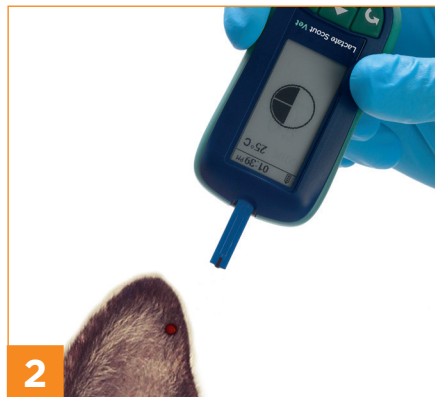


Easy to use	<ul style="list-style-type: none"> • Insert/remove test strip to turn on/off • Select animal species: Feline, Canine, Porcine, Ovine, Bovine, Equine • Only 0.2 µl of capillary or whole blood required • Pre-calibrated test strips • Device calibrated by simple coding • Lactate concentration, date/time, measuring mode, temperature and memory ID on a single display • Automatic self test
Fast and accurate	<ul style="list-style-type: none"> • Enzymatic amperometric detection method • Results within 10 seconds • Measuring range: 0.5 – 25 mmol/L • Lactate Scout Check Solutions available for function control
Example applications	<ul style="list-style-type: none"> • Prognosis and diagnosis of a variety of animal health conditions (such as shock, severe sepsis, low cardiac output, liver failure, poisoning, and drug therapy) • Assess the effects of preslaughter handling and transport stress • Performance diagnostics for high performance and race horses
Practical and reliable	<ul style="list-style-type: none"> • Stores up to 500 results • 1,000 tests using just 2 x CR2450 batteries • Pocket-size: 91 mm (h) x 46 mm (w) x 21 mm (d) • Lightweight: 60 g • Operating range: 10 – 45°C and max. 85% humidity

Catalog No.	Name
7023-0512	Lactate Scout Vet
7023-3422	Lactate Scout Test Strips (new 25 pack)
7023-6300	Lactate Scout Check Solution Low (1.8 - 2.2 mmol/L) - 1 x 2.5mL bottle
7023-6301	Lactate Scout Check Solution Mid (4.5 - 5.6 mmol/L) - 1 x 2.5mL bottle
7023-6302	Lactate Scout Check Solution High (8.9 - 11.1 mmol/L) - 1 x 2.5 mL bottle
7023-6303	Lactate Scout Check Solution multi pack 1 x 2.5mL Low (1.8 - 2.2 mmol/L), 1 x 2.5mL Mid (4.5 - 5.6 mmol/L), 1 x 2.5mL High (8.9 - 11.1 mmol/L)



1 Remove test strip and place into analyser.



2 Position the tip of the Lactate Scout Test Strip on the sample site and collect blood by touching with test strip.



3 Result appears in 10 seconds.

Distributed by

Manufacturer

EKF-diagnostic GmbH
Ebendorfer Chaussee 3
39179 Barleben
Germany

+49 (0) 39203 511 0

sales@ekfdiagnostics.com

www.ekfdiagnostics.com